

# Triggered codeswitching: Lexical processing and conversational dynamics

Mirjam Broersma<sup>1</sup>, Diana Carter<sup>2</sup>, Kevin Donnelly<sup>3</sup> and Agnieszka Konopka<sup>4</sup>

## Research Article

**Cite this article:** Broersma M, Carter D, Donnelly K, Konopka A (2020). Triggered codeswitching: Lexical processing and conversational dynamics. *Bilingualism: Language and Cognition* **23**, 295–308. <https://doi.org/10.1017/S1366728919000014>

Received: 8 July 2017

Revised: 19 October 2018

Accepted: 3 January 2019

First published online: 29 March 2019

### Key words:

triggered codeswitching; language choice; cognates; lexical activation; conversational speech; Welsh–English

### Address for correspondence:

Mirjam Broersma,

E-mail: [m.broersma@let.ru.nl](mailto:m.broersma@let.ru.nl),

[mirjam@mirjambroersma.nl](mailto:mirjam@mirjambroersma.nl)

<sup>1</sup>Centre for Language Studies, Radboud University, The Netherlands; Max Planck Institute for Psycholinguistics, The Netherlands; <sup>2</sup>Faculty of Creative and Critical Studies, University of British Columbia, Canada; Centre for Research on Bilingualism, Bangor University, Wales, UK; <sup>3</sup>Independent Researcher, Llanfairpwll, Ynys Môn, Wales, UK; Centre for Research on Bilingualism, Bangor University, Wales, UK and <sup>4</sup>University of Aberdeen, UK; Max Planck Institute for Psycholinguistics, The Netherlands

### Abstract

This study investigates the psycholinguistic process underlying triggered codeswitching – codeswitching facilitated by the occurrence of cognates – within the context of conversational dynamics. It confirms that, in natural bilingual speech, lexical selection of cognates can facilitate codeswitching by enhancing the activation of the non-selected language. Analyses of a large-scale corpus of Welsh–English conversational speech showed that 1) producing cognates facilitated codeswitching, 2) speakers who generally produced more cognates generally codeswitched more, even in clauses that did not contain cognates, 3) larger numbers of cognates in a clause increased the likelihood of codeswitching, 4) codeswitching temporarily remained facilitated after the production of cognates, and 5) hearing rather than producing cognates did not facilitate codeswitching. The findings confirm the validity of the proposed cognitive account of triggered codeswitching, and clarify the relation between the lexical activation of cognates and consecutive language choice, in accord with current insights in lexical processing.

## 1. Introduction

The common view on codeswitching – the use of two languages within the same conversation – has in previous decades evolved from something that “the ideal bilingual” should not fall prey to, at least not without a good external reason, “and certainly not within a single sentence” (Weinreich, 1953, p.73), via “a communicative act, possibly a somewhat peculiar one but a communicative act nonetheless” (Luckmann, 1983, p.97), to a phenomenon that “exemplifies the wonderful flexibility and creativity of language use [and] provides a unique testing ground for studying the cognitive mechanisms of bilingual language production” (Fricke & Kootstra, 2016, p.183). The present study employs this unique testing ground to investigate how the production of cognates affects subsequent language choice. It investigates so-called TRIGGERED CODESWITCHING – codeswitching facilitated by the occurrence of cognates (words which are similar in form and meaning in two languages) – within the context of conversational dynamics.

Over the previous century, codeswitching has been studied from increasingly diverse angles, including grammatical, sociolinguistic, psycholinguistic, and neuroscientific perspectives. One thing that these diverse approaches have clearly shown is that codeswitching is regulated at multiple levels of processing. The GRAMMATICAL study of codeswitching started with the early diary studies of Ronjat (1913) and Leopold (1939–1949). This line of research has shown that grammatical considerations affect the shape that codeswitches take. Within this field, e.g., the linear grammatical approach has proposed that codeswitching must adhere to constraints based on syntactic equivalence between languages (Lehtinen, 1966; Sankoff & Poplack, 1981), the Universal Grammar approach has searched for universal government constraints on codeswitching (Di Sciullo, Muysken & Singh, 1986; Halmari, 1997; Muysken, 2000), while the Matrix Language approach has proposed different roles for the languages involved in codeswitching, with the Matrix Language providing the morpho-syntactic frame and more diverse morpho-syntactic elements than the Embedded Language (Myers-Scotton, 1997; Myers-Scotton & Jake, 2000). The SOCIOLINGUISTIC study of codeswitching, starting with the seminal work of Fishman (1967) (cf. Blom & Gumperz, 1972; Gardner-Chloros, 2009), has shown that social processes, including the construction of interactional meaning (Auer, 1984, 1998) and the indexing and negotiation of social group membership (Myers-Scotton, 1993a, 1993b), structure codeswitching.

In all those approaches, the level of analysis is the conversation or the sentence. The psycholinguistic and neurolinguistic disciplines, to the contrary, have predominantly focused on LANGUAGE SWITCHING in experimental tasks requiring single-word responses (e.g., Costa & Santesteban, 2004; Hernandez, 2009; Kleinman & Gollan, 2016), as opposed to

© The Author(s) 2019. This is an Open Access article, distributed under the terms of the Creative Commons Attribution licence (<http://creativecommons.org/licenses/by/4.0/>), which permits unrestricted re-use, distribution, and reproduction in any medium, provided the original work is properly cited.

CODESWITCHING within or between sentences (so-called intra-sentential, and inter- or extra-sentential codeswitches, see e.g., Appel & Muysken, 1987; Poplack, 1980) produced in a conversational context. While there is no doubt that studies on language switching have yielded valuable insights in bilingual language production, it is important to note that there is necessarily a discrepancy between the requirements of single-word experiments and conversational language use. Differences are abundant, for example with respect to the process of sentence integration, speakers' beliefs about what kind of speech output is expected, and task requirements and strategies. For example, Kleinman and Gollan (2016) showed that whereas language switching studies generally show language switching costs (e.g., Broersma, Carter & Acheson, 2016; Christoffels, Firk & Schiller, 2007; Costa & Santesteban, 2004; Jackson, Swainson, Cunnington & Jackson, 2001; Meuter & Allport, 1999; Verhoef, Roelofs & Chwilla, 2009, 2010), which has been taken to reflect top-down language control, the occurrence of such costs is in fact task-driven. When participants based their decision to switch on the accessibility of the target word in both languages, rather than on other reasons such as participants' prior decisions to switch or external incentives (including task cues), switching did not incur any costs (Kleinman & Gollan, 2016). This raises the question to what extent language control, which is common in language switching experiments, plays a role in codeswitching in everyday language use outside the laboratory.

Similarly, our own work on the relation between cognates and codeswitching on the one hand, and language switching on the other hand, has shown disparate results. In conversational contexts, the occurrence of cognates was found to facilitate codeswitching, suggesting that the production of cognates increases the activation of the non-selected language (Broersma, 2009; Broersma & De Bot, 2006; Broersma, Isurin, Bultena & De Bot, 2009). In language switching experiments, in contrast, inhibition was found during and after the production of cognates<sup>1</sup>, suggesting that the availability of two highly related response alternatives (i.e., the cognates' representations in two languages) required increased cognitive control (Broersma et al., 2016)<sup>2</sup>. Structural priming studies have shown that cognates did lead to increased priming of syntactic structures between languages (Bernolet, Hartsuiker & Pickering, 2012), and of the position of code-switches (Kootstra, Van Hell & Dijkstra, 2012), suggesting again that the role of cognates depends heavily on the nature of the experimental task.

According to Green and Wei's control process model of codeswitching (2014), LANGUAGE TASK SCHEMAS that govern cognitive control processes (Green, 1986, 1998) cooperate in a codeswitching context, whereas in other contexts, presumably including most experiments, they compete. The specifics of the experimental context determine how they compete; in a single language context, control processes suppress output from the non-target language, whereas in a dual language context, language task schemas alternate.

The role of cognitive control is thus likely to be fundamentally different in experimentally-induced language switching than in

spontaneous codeswitching in everyday language use. The present study therefore investigates codeswitching from a psycholinguistic perspective but with special attention to conversational dynamics. It assesses whether, in natural conversation, cognates can facilitate codeswitching by enhancing the activation of the non-selected language, as previously suggested (Broersma, 2009; Broersma & De Bot, 2006; Broersma et al., 2009).

### 1.1. Triggered codeswitching

Previous studies have shown that cognates can play a role in the occurrence of codeswitching. The first observations about a relation between the two were made by Clyne, studying the language use of immigrant populations in Australia (Clyne, 1967, 1972, 1977, 1980, 2003). Clyne observed that cognates seemed to co-occur with codeswitches relatively often, in spontaneous speech of multilingual populations as diverse as German-, Croatian-, Dutch-, Vietnamese-, Italian-, and Spanish-English bilinguals, and Hungarian-German-English and Dutch-German-English trilinguals (Clyne, 2003). Statistical evidence for triggered codeswitching was first provided by Broersma and De Bot (2006), with a corpus-study of Moroccan Arabic-Dutch bilinguals' conversational speech. Codeswitches occurred significantly more often directly after a cognate than expected by chance. This finding was replicated with Dutch-English (Broersma, 2009; Broersma et al., 2009) and Russian-English conversational speech (Broersma et al., 2009). The diversity of these language combinations, with Moroccan Arabic-Dutch and Russian-English being unrelated languages with a small number of cognates, and Dutch-English both being West Germanic languages sharing many cognates, suggests that triggered codeswitching might be a common phenomenon in multilingual natural speech.

Broersma and De Bot (2006) propose that the selection of a cognate from the mental lexicon might lead to a shift in the activation of the two languages that the cognate is connected to, boosting the activation of the least active language (i.e., the 'non-selected' language, Green, 1986). This is compatible with a common view, captured in the Subsystems Hypothesis (Paradis, 1987, 2004), that each one of a bilingual's languages forms a subset within a general (i.e., shared) system (cf. Green & Wei, 2014). Items are connected more strongly within than between languages, such that subsystems can function as separate units<sup>3</sup>. For example, at the level of the mental lexicon, when a word is activated, this adds to the activation of all the words in the same language (Paradis, 1998, 2004). This would make it possible for the selection of a cognate to affect the level of activation of all the words of the non-selected language at once.

The general consensus among psycholinguists is that, when bilinguals speak one language, lexical representations from both languages are activated (e.g., Abutalebi & Green, 2007; Branzi, Martin, Abutalebi & Costa, 2014; Costa & Caramazza, 1999; Costa & Santesteban, 2004, 2006; De Bot, 1992; Finkbeiner, Gollan & Caramazza, 2006; Green, 1998; Green & Wei, 2014; Kroll, Bobb, Misra & Guo, 2008; Kroll, Bobb & Wodniecka, 2006). When a speaker intends to produce a cognate, this thus entails the activation of the cognate's lemmas in both languages. As activation spreads from the cognate's two lemmas to the cognate's two word form representations, the overlapping parts of the

<sup>1</sup>On the cognate trials, there was inhibition for some participants and facilitation for others, depending on their language dominance. On the trials after the cognates, there was inhibition for all language dominance groups.

<sup>2</sup>Whereas Broersma (2011) reports preliminary findings suggesting that cognates facilitated codeswitching in language switching naming experiments, further analysis of the data did not corroborate those findings.

<sup>3</sup>Being able to treat each language as a subset is a requirement for monolingual language use. Thus, even habitual codeswitchers are likely to have their linguistic system organized into subsets.

word forms might receive activation from both lemmas; the similarity of the two word forms would thus enhance the activation of the cognate's TWO WORD FORM REPRESENTATIONS. Further, feedback loops from the phonological representations to the lemmas could also increase the activation of the cognate's TWO LEMMAS. It has been proposed that lemmas of words that share aspects of their form receive additional activation through such feedback loops (Bernolet et al., 2012; Declerck & Philipp, 2015). Thus, the cognate's two lemmas would receive further activation from not one but two word forms, the activation of each of which was already enhanced. An additional or alternative explanation might be that cognates are more tightly connected at the CONCEPTUAL level than non-cognates (De Groot & Nas, 1991; Van Hell & De Groot, 1998; Van Hell & Dijkstra, 2002), such that when one lemma of a cognate is activated, this activation might spread to the other lemma via the conceptual level, enhancing the activation of the language network of that lemma, thereby facilitating codeswitching (Broersma & De Bot, 2006).

Similarly, overlap in meaning and form is generally held responsible for the processing advantages that have been found for cognates over non-cognates in a variety of experimental tasks, which include: faster picture naming for cognates than for non-cognates (Christoffels, De Groot & Kroll, 2006; Christoffels et al., 2007; Costa, Caramazza & Sebastián-Gallés, 2000; Hoshino & Kroll, 2008; Verhoef et al., 2009) and fewer tip-of-the-tongue experiences (Gollan & Acenas, 2004), faster word recognition in visual lexical decision in L1 (Van Hell & Dijkstra, 2002) and L2 (Dijkstra, Grainger & Van Heuven, 1999; Lemhöfer & Dijkstra, 2004), stronger between-language masked associative priming (De Groot & Nas, 1991) and repetition priming (De Groot & Nas, 1991; Gollan, Forster & Frost, 1997), faster production of associates within and between languages (Van Hell & De Groot, 1998; Van Hell & Dijkstra, 2002), faster translation for cognates than for non-cognates (Christoffels et al., 2006; Kroll & Stewart, 1994), and ERPs suggesting that cognates behave as higher-frequency words (Strijkers, Costa & Thierry, 2010), with ERP components associated with effects of lexical and phonological processing respectively (Christoffels et al., 2007; Strijkers et al., 2010). Note that some studies have reported the absence of cognate facilitation (Bultena, Dijkstra & Van Hell, 2015; Costa et al., 2000; Ivanova & Costa, 2008; Strijkers et al., 2010), or even cognate inhibition (Broersma et al., 2016; Filippi, Karaminis & Thomas, 2014; Li & Gollan, 2018).

The lexical activation of a cognate would thus lead to the particularly strong activation of the cognate's lemmas and word forms in both languages. Whereas this might not noticeably affect the level of activation of the language that was already being spoken, the activation of the other language might be substantially enhanced. Note that for a speaker who finds herself in a setting where codeswitching is appropriate, both languages are likely to be highly activated<sup>4</sup>. In such settings, in which the social circumstances make codeswitching desirable and both languages are readily available to the speakers, the linguistic system has been described as being in a state of 'self-organized criticality' (De Bot, Broersma & Isurin, 2009; De Bot, Lowie & Verspoor, 2007): in analogy to critical states in physics, following the Dynamic Systems Theory (Bak, 1996), the linguistic system is said to be attracted to a state in which small events (such as the

production of a cognate) are enough to lead to large changes (such as codeswitching). Thus, the small amount of additional lexical activation resulting from the selection of a cognate increases the likelihood of a switch into the other language (Broersma, 2009; Broersma & De Bot, 2006).

According to Green and Wei's control process model of codeswitching (2014), in a codeswitching context, language task schemas cooperate rather than compete, enabling such changes in the activation of language networks and the occurrence of triggered codeswitching (Green & Wei, 2014). Following Muysken's (2000) classification of codeswitches as insertions, alternations, and congruent lexicalizations, for the former two (which were predominant in Moroccan Arabic–Dutch (triggered) codeswitching, Broersma & De Bot, 2006), the control process model of codeswitching proposes a COUPLED CONTROL MODE in which two language task schemas take turns controlling language choice. For congruent lexicalization, also known as dense codeswitching between closely related languages (such as described for Dutch–English (triggered) codeswitching, Broersma, 2009; Broersma et al., 2009), the model proposes an OPEN CONTROL MODE in which language task schemas do not exercise top-down control on language choice. In both modes, codeswitches can be either intended, or an opportunistic response to a change in activation as a result of, for example, the occurrence of a cognate (Green & Wei, 2014).

The effect of the selection of a cognate on the activation of a language network is proposed to gradually diminish over time (Broersma & De Bot, 2006). As the exact order in which words are selected from the mental lexicon cannot be determined in spontaneous speech, Broersma and De Bot (2006) propose to assess the effect of cognates on codeswitching at the clause level, under the assumption that words that end up in the same clause have likely been selected from the mental lexicon around the same time. Following Levelt (1989), they adopt the basic clause (containing maximally one main verb) as unit of measurement. Codeswitching is then operationalized as either the use of two languages within the same clause, or the consecutive use of basic clauses in different languages. Note that though this definition is reminiscent of intra- and inter-sentential codeswitching, the unit of measurement is smaller.

The present study investigates whether the patterns of triggered codeswitching in spontaneous bilingual conversations conform to this scenario.

## 1.2. The present study

Using a large-scale corpus of Welsh–English spontaneous conversation, this study investigates whether triggered codeswitching is indeed the result of an increase in lexical activation of the non-selected language following the activation (and, in the cases that can be observed in overt speech, the selection) of a cognate. If such a change in language activation is what underlies triggered codeswitching, this should be visible in the patterns of co-occurrence of cognates and codeswitching in bilingual conversational speech.

First, this study aims to replicate the finding that cognates can facilitate codeswitching (Broersma, 2009; Broersma & De Bot, 2006; Broersma et al., 2009), with a different language pair and with a much larger corpus than before. It tests the predictions of the adjusted triggering theory, as first proposed by Broersma and De Bot (2006). Contrary to the original triggering hypothesis (Clyne, 1967, 1972, 1977, 1980, 2003), which considered

<sup>4</sup>Rather than referring to a 'selected' and a 'non-selected language' like we do in the present paper, we could also speak of two selected languages that control the speech output in turns (De Bot, Broersma, & Isurin, 2009).

codeswitching as a linear (left-to-right) phenomenon at the level of the surface structure, the adjusted triggering theory is based on psycholinguistic processes, and has a greater predictive and explanatory value than the original triggering hypothesis (Broersma, 2009; Broersma & De Bot, 2006). The adjusted triggering theory predicts – and our first hypothesis therefore is – that clauses are more often codeswitched, either clause-internally (containing words from two languages) or -externally (being in a different language than the previous clause), when they do contain a cognate than when they do not. Previous studies that provide support for the theory included data from one to six speakers (Broersma, 2009; Broersma & De Bot, 2006; Broersma et al., 2009). The present study analyses data from as many as 100 speakers, over 50 conversations, from the Welsh–English Siarad Corpus of spontaneous bilingual speech (Deuchar, Davies, Herring, Parafita Couto & Carter, 2014; ESRC\_Centre\_for\_Research\_on\_Bilingualism, n.d.). This is the first study of this magnitude to test the triggering theory.

It has been proposed that the state of the activation of a bilingual's two languages fluctuates under the influence of the situational context. The notion of the LANGUAGE MODE describes those states as a continuum, with the monolingual mode, where one language is much more activated than the other, on one end, and the bilingual language mode, where both languages are highly activated, on the other end (Grosjean, 1998; Soares & Grosjean, 1984). Codeswitching is typically associated with a bilingual language mode. We propose that a bilingual language mode might also be characterized by an increased likelihood of producing cognates, as the ultimate bilingual words. Whenever speakers have a choice between a cognate and a non-cognate alternative, a bilingual language mode might bias them towards the cognate. Our second hypothesis is therefore that the proportion of cognates that a speaker uses THROUGHOUT THE CONVERSATION is related to codeswitching. We propose that the production of both cognates and codeswitches is more common for speakers in a bilingual language mode, suggesting a positive global relation between cognate density and codeswitching. It is thus predicted that speakers who produce more cognates during the conversation will overall codeswitch more than speakers who produce fewer cognates – that is, even in clauses where they do not produce any cognates.

Third, lexical activation is considered to be incremental (e.g., Levelt, Roelofs & Meyer, 1999; Pitt & Samuel, 2006). Thus, if triggered codeswitching is the result of an increase in activation of the non-selected language resulting from the selection of a cognate, the production of MULTIPLE cognates should increase the likelihood of codeswitching even more. Previous studies on triggered codeswitching assessed language pairs that differ widely in cognate density. In those datasets, between 3 and 71% of all the words were cognates (Broersma, 2009; Broersma & De Bot, 2006; Broersma et al., 2009). In all datasets, there was a significant relation between the occurrence of cognates and codeswitches. The present study for the first time investigates whether the NUMBER of cognates within a clause affects the likelihood of codeswitching. It is predicted that a larger number of cognates within a clause will lead to a higher likelihood of clause-external codeswitching. (Note that no increased likelihood of clause-INTERNAL codeswitching is predicted, because a larger number of cognates implies a smaller number of non-cognates within the clause, effectively leaving less room for clause-internal codeswitching.)

Fourth, activation in the linguistic system is expected to gradually decay over time (e.g., Foygel & Dell, 2000; Paradis, 1998,

2004), unless interference or inhibition bring it down (e.g., Abutalebi & Green, 2007; Altmann & Gray, 2002; Green, 1998; Green & Wei, 2014). Once the activation of a language network has been increased, its activation is thus expected to remain high for some time. It is therefore predicted that codeswitching will be facilitated for some time AFTER the production of a cognate, such that the production of a cognate in one clause facilitates codeswitching by the same speaker not only in the same clause, but also in the next one.

Fifth, as listening and speaking involve the same mental lexicon (e.g., Cutler, 2012; Levelt et al., 1999; Liberman, Cooper, Shankweiler & Studdert-Kennedy, 1967), hearing a cognate might affect the level of activation of language subsets in a similar way as producing one. Studies on SYNTACTIC priming show that perceived speech affects produced speech, both monolingually (Konopka & Meyer, 2014; Pickering & Ferreira, 2008) and cross-linguistically (Hartsuiker & Bernolet, 2017; Hartsuiker, Pickering & Veltkamp, 2004; Kootstra & Doedens, 2016; Kootstra, Van Hell & Dijkstra, 2009; Loebell & Bock, 2003). The tendency to code-switch (Fricke & Kootstra, 2016) and the word order in code-switched utterances (Kootstra, Van Hell & Dijkstra, 2010) are also subject to between-speaker priming. Such inter-speaker priming tends to be weaker, however, than self-priming: Fricke and Kootstra (2016) showed that speakers were more likely to codeswitch if the preceding utterance contained a codeswitch, when there was no speaker change in between; and also, but less so, when there was a speaker change. Similarly, Gries (2005) showed stronger self-priming than inter-speaker priming in monolingual speech. With respect to triggered codeswitching, in the Russian–English corpus, Broersma et al. (2009) found no evidence that cognates uttered by one speaker facilitated codeswitching by another speaker. The present study, with a much larger corpus, re-investigates inter-speaker triggered codeswitching. It predicts that cognates produced by one interlocutor will not facilitate codeswitching by the other interlocutor to the same extent as self-produced cognates do, if at all.

Five hypotheses are thus investigated concerning: 1) the occurrence of triggered codeswitching, 2) effects of cognate density, 3) incremental build-up of triggered codeswitching, 4) the scope of triggered codeswitching, and 5) inter-speaker dynamics of triggered codeswitching.

## 2. Method

### 2.1. The Siarad Corpus

The Siarad Corpus (ESRC\_Centre\_for\_Research\_on\_Bilingualism, n.d.) is a large Welsh–English corpus, consisting of forty hours of spontaneous speech by fluent bilinguals in informal conversations between friends or family members. It contains 447,507 words from 151 speakers across 69 conversations of approximately 30 minutes each (Deuchar et al., 2014). CHAT transcriptions (MacWhinney, 2000) are provided, and language tags indicating Welsh, English and cognate words.

Across the Siarad Corpus, 81% of the clauses (with a finite verb) are monolingual and 19% are mixed. Welsh is used more than English in all conversations, providing between 51–93% (average: 84%) of the words, and forming the base language in 95% of the monolingual and 100% of the mixed-language clauses (Carter, Deuchar, Davies & Parafita Couto, 2011). Hence, the large majority of codeswitches consist of English insertions into clauses where Welsh is the base language. 71% are single-word

and 29% are multi-word insertions, most typically nouns and adjectives and sometimes adverbs (Deuchar, Donnelly & Piercy, 2016). The nature of the codeswitches in the Siarad corpus is considered to be representative of the community's language use (Davies, 2010). The following examples (from the 'Davies1' conversation) both have Welsh as the base language and contain English insertions (underlined); further, (1) contains one cognate and (2) four cognates (in bold).

- (1) **mam** yn mynd (y)n stressed.  
*mum getting stressed*
- (2) a o'n i fel shower **quick supper straight i practice**.  
*and I was like quick shower, supper, straight to practice*

For the present study, as the small proportion of clauses with English as the base language precludes a reliable comparison of Welsh and English as the base language, we chose to collapse over the two languages in all analyses. To facilitate statistical analyses, only conversations between two people were selected, yielding 50 conversations from a total of 100 speakers. Transcription tiers were glossed with a newly developed automated method called the Bangor Autoglosser (Carter, Broersma & Donnelly, 2016; Carter, Broersma, Donnelly & Konopka, 2017; Donnelly & Deuchar, 2011). Complex clauses were split into simple clauses with the newly developed Bangor Automated Clause-Splitter (Carter et al., 2016; Carter et al., 2017), yielding 64,521 clauses. For each clause, the base language was determined as the language of the finite verb. Note that the unit of measurement is thus somewhat different from earlier studies of triggered codeswitching that used basic rather than simple clauses (Broersma, 2009; Broersma & De Bot, 2006; Broersma et al., 2009). The Siarad corpus provides this information to enable application of the Matrix Language Frame Model (Myers-Scotton, 1997; Myers-Scotton & Jake, 2000). Whereas that model does not play a role in the present study, we nevertheless chose to adopt simple clauses as the unit of measurement, and finite verbs as indicators of the base language, because of the availability of this information in the corpus.

## 2.2. Variables

The data required for the analyses were obtained as follows. To assess clause-internal codeswitching, only clauses containing two or more words were included in the analyses (removing the one-word clauses:  $8,062/64,521 = 12\%$ ). For each of the remaining 56,459 clauses, it was assessed whether it contained a clause-internal codeswitch. Clauses were considered to contain an internal codeswitch when they contained both uniquely Welsh and uniquely English words (disregarding any words with ambiguous language identity, i.e., cognates).

For each clause (including the single-word clauses), it was assessed whether it contained a clause-external codeswitch. Clause-external codeswitching was assessed with a BACKWARD METHOD and a FORWARD METHOD. Clauses were considered to contain an external codeswitch when the language of the finite verb differed from that of the previous clause (backward method) or of the following clause (forward method). (Note that a single clause could thus contain both an internal and an external codeswitch.) Analyses (and figures) only include clauses that were PRECEDED by a clause that did not contain any cognates for the backward method, and that were FOLLOWED by a clause that did not contain any cognates for the forward method, to avoid

uncontrolled cognate effects from those adjacent clauses. For the backward method, the first clause of each conversation served as the reference and was excluded from the analysis, whereas for the forward method, the last clause of each conversation served as the reference and was excluded from analysis.

For each word, it was assessed whether it was a cognate or not. Words were considered as cognates when they were marked as such in the Siarad corpus (based on whether or not they occur in specified published dictionaries, Deuchar et al., 2014), or when they occurred on a list of Welsh verbs borrowed from English and assimilated into Welsh to a greater or lesser extent (Stammers & Deuchar, 2012), or on a list of other cognates manually compiled for this study<sup>5</sup>.

Two variables addressed the characteristics of the cognates. Presence of Cognates was a binary variable (yes/no) indicating whether a clause contained any cognates or not. Number of Cognates provided the total number of cognates in the clause if larger than zero.

For each clause, the control variable Clause Length indicated the total number of words in the clause. Speaker Change indicated whether or not a clause was the last clause in a speech turn and thus, when assessing clause-external codeswitching with the FORWARD method, whether two clauses were produced by one single or two different speakers.

For each speaker, the Proportion of Cognates per Speaker provided the proportion of cognates (i.e., the total number of cognates divided by the total number of words) over the entire conversation for the individual speaker.

## 2.3. Statistical analyses

The data were analyzed in R (version 3.3.2) (R Development Core Team, 2009) with logit mixed models (Jaeger, 2008) (lme4 version 1.1-13). These analyses allow for simultaneous modeling of effects at the level of conversations and individual speakers (in this dataset, speakers were nested within conversations), and allow for testing of variability associated with each predictor at the level of both conversations and speakers with the inclusion of random slopes (e.g., the effect of a predictor may differ across speakers, and random slopes for this predictor capture this variability). They are also particularly well suited for analysis of datasets with unequal numbers of observations at each level of the predictor of interest. Overall, these models provide a more sensitive test of the influence of each predictor on the target behavior than analyses of variance, particularly for binary response variables, or other parametric and non-parametric tests (i.e., tests that require aggregation of data at the level of either "participants" or "items").

All continuous predictors were mean-centered and categorical predictors were coded with Helmert contrast codes: e.g., for binary predictors, one level of the predictor was assigned a -.5 weight and the other a .5 weight (the weights were then adjusted for different numbers of observations within each level).

The tables list *beta* coefficients (in log-odds space) and associated *z* values. The intercepts in all models show the base probability of speakers producing (clause-internal or -external) codeswitches. Coefficients for all fixed effects show the log odds of each predictor influencing production of codeswitches; for clarity, coefficients are transformed from log odds to odds ratios in

<sup>5</sup>Arguably, cognate status should not be treated as a dichotomy but as a continuous variable. That was not feasible here, however, as the Siarad corpus does not provide information about the degree of semantic, orthographic, or phonological overlap.

the text below. Odds ratios are easier to interpret than log odds, and indicate whether codeswitching was more likely to occur as a function of a given predictor or not. For example, in Table 1a, the intercept of  $-2.31$ , which equals an odds ratio of  $.10$ , shows that the odds of producing clauses with clause-internal codeswitches are only  $.10$  higher than clauses without clause-internal codeswitches; the coefficient for the predictor Presence of Cognates of  $.50$ , which equals an odds ratio of  $1.65$ , shows that the odds of producing a clause-external codeswitch are  $1.65$  times higher if a cognate is present.

For all analyses, we first fit full models, including all three-way interactions among the predictors and the maximal random structure. Models were simplified by removing random slopes iteratively in cases of non-convergence (Barr, Levy, Scheepers & Tily, 2013).

### 3. Results

In order to test the five hypotheses, the analyses examined the effect of cognates on the occurrence of either CLAUSE-INTERNAL or CLAUSE-EXTERNAL codeswitches. Each model also included the Proportion of Cognates per Speaker (except the model on the Number of Cognates, see 3.3).

#### 3.1. The occurrence of triggered codeswitching

The first hypothesis was that clauses that contained one or more cognates were more often codeswitched, either clause-internally or clause-externally, than clauses that did not contain a cognate. Figure 1a and 1b shows that, as predicted, there were more clause-internal and clause-external codeswitches in clauses containing one or more cognates than in clauses without any cognates.

Two models evaluated the effect of the Presence of Cognates in the clause on the occurrence of codeswitching in the same clause, the first for clause-internal codeswitching (Table 1a) and the second for clause-external codeswitching (Table 1b). Clause-external codeswitching was assessed in a BACKWARD manner (comparing the language of each clause with that of the previous clause). Each model also included the variable Proportion of Cognates per Speaker, which will be discussed in 3.2.

The models showed a reliable effect of the Presence of Cognates on clause-internal codeswitching and on clause-external codeswitching (Table 1); the odds of speakers producing a clause-internal codeswitch in clauses containing cognates were  $1.65$  times higher than in the absence of a cognate, and the odds of speakers producing a clause-external codeswitch were  $1.34$  times higher in clauses containing cognates. Note that the effect of the Presence of Cognates on the same speaker's codeswitching is replicated in all the following analyses.

#### 3.2. Effects of cognate density

The second hypothesis was that speakers who produced more cognates during the conversation overall would codeswitch more than speakers who produced fewer cognates (even in clauses where they did not produce cognates). Indeed, as Figure 2 shows, speakers who produced more cognates during the conversation had a higher likelihood of codeswitching, both for clause-internal codeswitches (Figure 2a) and for clause-external codeswitches (determined in a backward manner) (Figure 2b).

The two models described above showed reliable effects of the Proportion of Cognates per Speaker on clause-internal and

clause-external codeswitching (Table 1a and 1b), confirming that the likelihood of producing codeswitches was positively related to the Proportion of Cognates per Speaker. Note that the effect of Proportion of Cognates per Speaker on codeswitching is replicated in all the following analyses.

The proportions of cognates throughout the conversation are strongly correlated for the speaker dyads ( $r = .63$ ). This supports the notion that the use of cognates might reflect the language mode a speaker is in. As conversational partners are likely to be in a similar language mode, they might thus align their use of cognates.

#### 3.3. Incremental build-up of triggered codeswitching

The third hypothesis was that a larger number of cognates within a clause would lead to a higher likelihood of clause-external codeswitching. In line with this prediction, as Figure 3 shows, among all the clauses that contained one or more cognates, there were more clause-external codeswitches in clauses that contained more cognates. The number of clauses with more than three cognates was fairly small, such that the relatively low proportion of codeswitching in those clauses must be interpreted with caution. (Here, clauses preceded by clauses containing cognates were not excluded from the analysis, as the effect of cognates within the same clause was expected to be stronger than that of cognates in the previous clause.)

An analysis was performed using the Number of Cognates in the clause if larger than zero as a continuous predictor, examining its effect on clause-external codeswitching determined in the backward manner. Clause Length was included to assess whether any effect on codeswitching followed from the absolute number of cognates, or rather from the number of cognates relative to the total number of words in the clause. Due to the inclusion of Clause Length, Proportion of Cognates per Speaker could not be included in the model (as models with both predictors failed to converge).

As Table 2 shows, there was a significant effect of the Number of Cognates, with more clause-external codeswitches in clauses that contained more cognates; the odds of speakers producing a codeswitch increased by  $1.26$  with each additional cognate. Thus, as predicted, there was a positive relation between the number of cognates in the clause and clause-external codeswitching in the same clause. This was an effect of the relative rather than the absolute number of cognates in the clause, as shown by the significant interaction between Number of Cognates and Clause Length. In addition there was a main effect of Clause Length (with more clause-external codeswitches in shorter clauses).

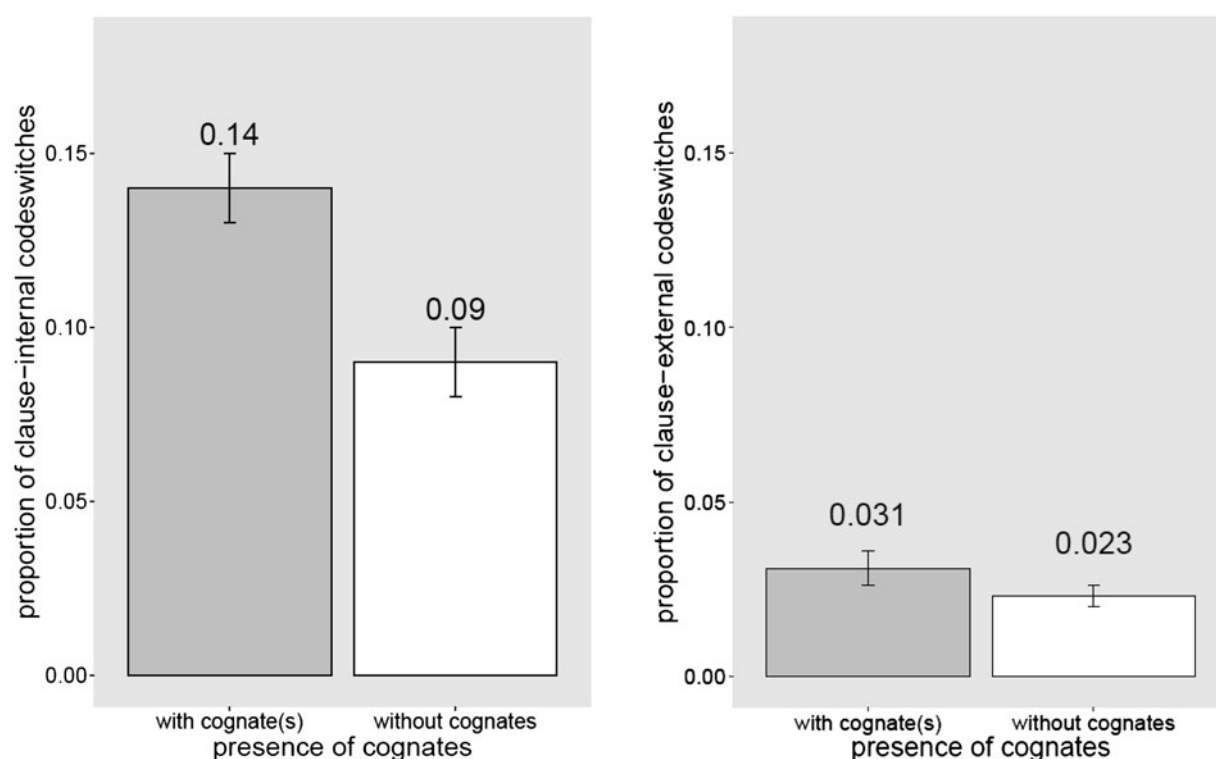
Finally, recall that the Number of Cognates was not expected to affect clause-INTERNAL codeswitching in the same way as clause-external codeswitching, as a larger Number of Cognates leaves relatively less room for non-cognates within a clause and thus for clause-internal codeswitching. Indeed, an analogous analysis for clause-internal codeswitching showed a NEGATIVE relation between Number of Cognates and codeswitching, and a positive relation between Clause Length and codeswitching, with longer clauses containing more clause-internal codeswitches (see Appendix).

#### 3.4. The scope of triggered codeswitching

The fourth hypothesis was that, as activation decays gradually, the production of a cognate in one clause would still facilitate

**Table 1.** Two models predicting the production of a) clause-internal codeswitches, and b) clause-external codeswitches in the same clause (backward method). In all tables: (s) refers to the inclusion of random slopes; coefficients are given in log odds, but are reported in the text as odds ratios (for main effects); \* =  $p < .05$  (including smaller  $p$  values), † =  $p < .10$ .

Predictor	a) Clause-internal codeswitches			b) Clause-external codeswitches (backward)		
	$\beta$	st.err.	z value	$\beta$	st.err.	z value
Intercept	-2.31	.08	-29.41*	-4.58	.16	-28.22*
Presence of Cognates	.50	.04	11.73*	.29	.11	2.64*
Proportion of Cognates per Speaker	22.60	2.31	9.79*	32.80	5.63	5.82*
Presence of Cognates * Proportion of Cognates per Speaker	.18	1.56	.12	.77	3.91	.20



**Fig. 1.** Proportion of codeswitches in clauses with and without cognate(s). (a) clause-internal codeswitches; (b) clause-external codeswitches in the same clause (backward method). All figures show by-participant means; error bars are standard errors.

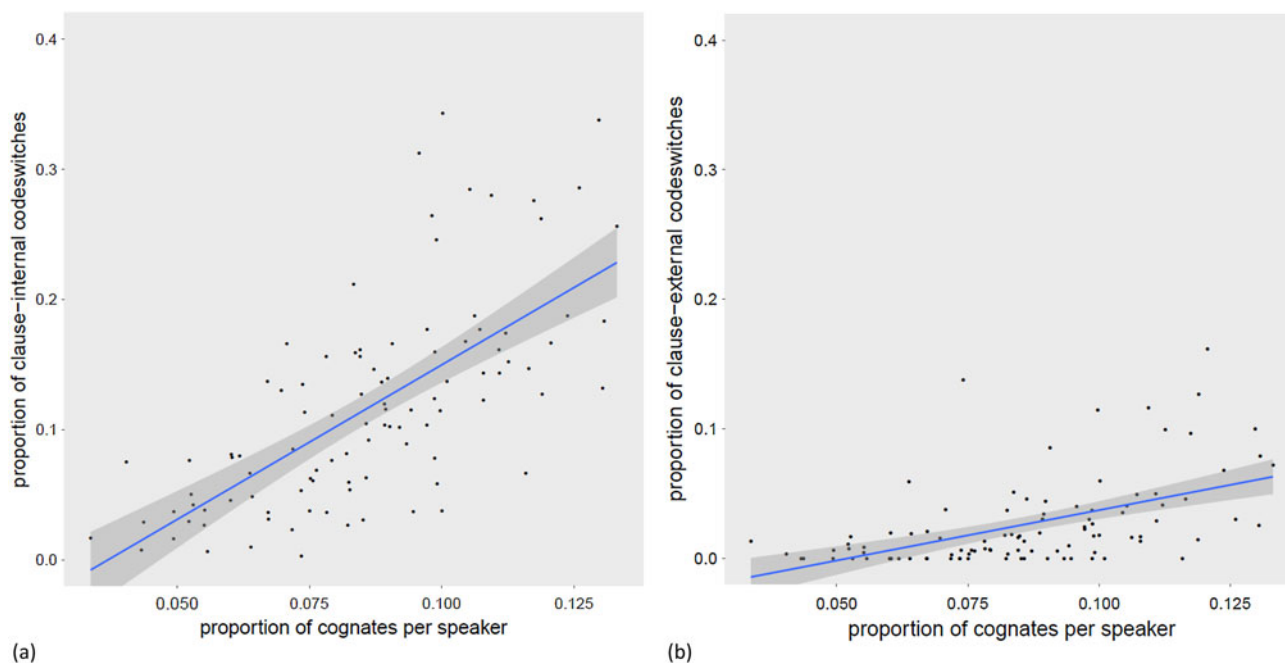
codeswitching in the same speaker's next clause. In order to investigate this, clause-external codeswitching was assessed in a FORWARD manner (comparing the language of each clause with that of the NEXT clause), limiting the analysis to those cases where both clauses were produced by a single speaker. This analysis enabled us to investigate what the effect was of the characteristics of one clause (i.e., whether or not it contained a cognate) on the clause-external codeswitching in the NEXT clause. Figure 4 shows that, as predicted, clauses with cognates were more often followed by external codeswitches in the next clause than clauses that did not contain any cognates; i.e., there were more clause-external codeswitches in clauses AFTER CLAUSES CONTAINING COGNATES than after clauses without any cognates.

A model was fit to evaluate the effect of the Presence of Cognates in the clause on the occurrence of clause-external codeswitches in the next clause by the same speaker. There was indeed a reliable effect of the Presence of Cognates (Table 3); the odds of speakers producing a clause-external codeswitch after clauses

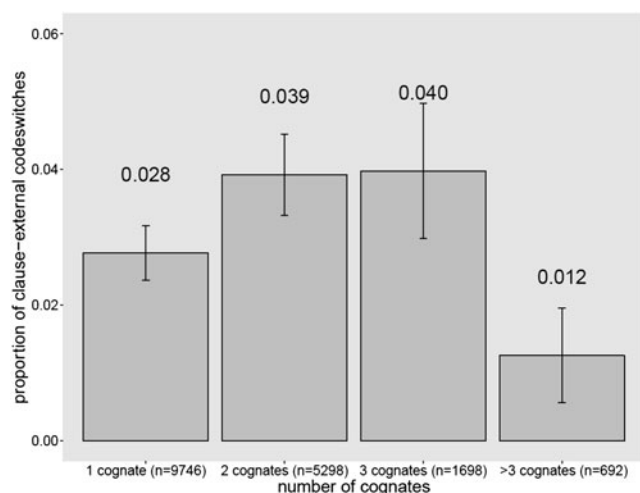
containing cognates were 1.68 times higher than after clauses not containing any cognates. Thus, the triggering effect of cognates extends beyond the clause they are part of. Second, there was again a significant effect of the Proportion of Cognates per Speaker, showing that speakers who produced more cognates during the conversation had a higher likelihood of codeswitching.

### 3.5. Inter-speaker dynamics of triggered codeswitching

The fifth hypothesis was that cognates that were produced by the interlocutor would not facilitate codeswitching as much as self-produced cognates, if at all. Thus, the Presence of Cognates in one clause was predicted to affect clause-external codeswitching in the following clause less when the two clauses were produced by two different speakers (i.e., when there was a Speaker Change in between) than when they were produced by a single speaker. In order to investigate this, an analysis was done similar to the previous one, but now including only those cases where the



**Fig. 2.** Proportion of codeswitches as a function of Proportion of Cognates per Speaker, with fitted regression lines and the 95% confidence region. (a) clause-internal codeswitches; (b) clause-external codeswitches in the same clause (backward method).



**Fig. 3.** Proportion of codeswitches as a function of the Number of Cognates in the clause if larger than 0: clause-external codeswitches in the same clause (backward method). The number of cases over which proportions were calculated is included in parentheses.

two clauses were produced by two different speakers; next, a comparison was made between those cases where the two clauses were produced by a single versus two different speakers.

First, Table 4 shows that in the event of a speaker change, clauses with cognates were equally often followed by external codeswitches in the next clause as clauses without any cognates. Thus, the triggering effect which was found to extend beyond the clause that the cognates were part of FOR THE SAME SPEAKER (see 3.4) does not extend to the next speaker.

There was also a significant positive effect of the next speaker's Proportion of Cognates per Speaker on that same speaker's codeswitching, confirming the global effect of cognate density on codeswitching.

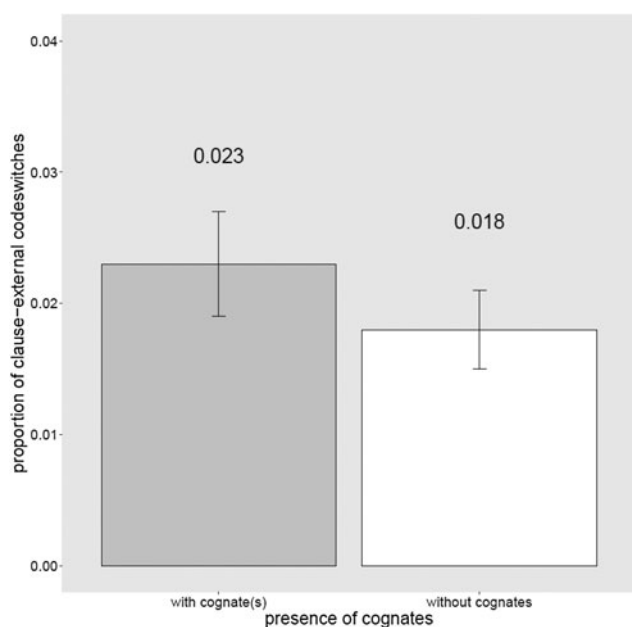
**Table 2.** Model predicting the production of clause-external codeswitches in the same clause (backward method) for pairs of clauses produced by a single speaker; includes only clauses where the Number of Cognates is larger than zero.

Predictor	Clause-external codeswitches (backward)		
	$\beta$	st.err.	z value
Intercept	-3.95	.15	-25.55*
Number of Cognates	.23	.06	4.13*
Clause Length	-.07	.02	-4.80*
Number of Cognates * Clause Length	-.03	.01	-2.36*

Next, the model with the variable Speaker Change (Table 5) showed a significant interaction between Presence of Cognates and Speaker Change, confirming that the effect of Presence of Cognates on codeswitching depended on whether the cognates were self-produced or produced by the interlocutor.

In addition, there was a main effect of Speaker Change, with more clause-external codeswitching in the first clause of a new speech turn than in clauses within a speech turn (the odds of producing a codeswitch were 1.52 times higher in the first clause of a new speech turn). Further, as in the previous analyses, there was a main effect of Presence of Cognates, as well as a main effect of the Proportion of Cognates per Speaker (here in some cases reflecting the value of the same speaker and in other cases the – strongly correlated – value of the other speaker), showing a positive global effect of cognate density. There was also a significant interaction between Speaker change and Proportion of Cognates per Speaker, and a significant three-way interaction among Presence of Cognates, Speaker Change, and Proportion of Cognates per Speaker.





**Fig. 4.** Proportion of codeswitches following on clauses with and without cognate(s): clause-external codeswitches in the next clause (forward method) for pairs of clauses produced by a single speaker.

**Table 3.** Model predicting the production of clause-external codeswitches in the next clause (forward method) for pairs of clauses produced by a single speaker.

Predictor	Clause-external codeswitches (forward)		
	$\beta$	st.err.	z value
Intercept	-4.99	.19	-26.06*
Presence of Cognates	.52	.25	2.13*
Proportion of Cognates per Speaker	36.78	5.44	6.75*
Presence of Cognates * Proportion of Cognates per Speaker	-3.92	6.56	-.60

## 4. Discussion

### 4.1. The five hypotheses

This study tested the adjusted triggering theory (Broersma & De Bot, 2006), which states that triggered codeswitching is the result of an increase in lexical activation of the non-selected language following the lexical selection of a cognate. Using a large corpus of bilingual conversational speech, five hypotheses were tested. Patterns of co-occurrence of cognates and codeswitches were examined and found to be compatible with all five hypotheses, thus providing evidence in favor of the adjusted triggering theory.

First, this study set out to test the predictions of the adjusted triggering theory (Broersma & De Bot, 2006), that clauses that contain a cognate are more often codeswitched, either clause-internally or -externally, than clauses that do not contain a cognate. Confirming the hypothesis, there was a very consistent effect of Presence of Cognates on codeswitching: in all analyses, there were more codeswitches in clauses containing cognates than in clauses without any cognates. In the Presence of Cognates there were significantly more clause-internal and -external codeswitches

**Table 4.** Model predicting the production of clause-external codeswitches in the next clause (forward method) for pairs of clauses produced by two different speakers.

Predictor	Clause-external codeswitches (forward)		
	$\beta$	st.err.	z value
Intercept	-4.52	.35	-12.85*
Presence of Cognates	-.63 (s)	.72	-.87
Proportion of Cognates per Speaker for the second speaker	39.52	9.85	4.01*
Presence of Cognate * Proportion of Cognates	-1.15	17.27	-.07

than in their absence. These findings confirm the results from earlier tests of the adjusted triggering theory (Broersma, 2009; Broersma & De Bot, 2006; Broersma et al., 2009), with a different language pair and, importantly, with a much larger corpus than previously used.

The second hypothesis was that there would be a positive GLOBAL relation between a speaker's cognate density and codeswitching. The proportion of cognates that a speaker used throughout the conversation was predicted to be positively related to codeswitching, such that speakers who produced more cognates during the conversation would OVERALL (i.e., even in clauses where they did not produce any cognates) codeswitch more than speakers who produced fewer cognates. Confirming the hypothesis, there were consistent effects of the Proportion of Cognates per Speaker on codeswitching in all analyses. Speakers who produced more cognates overall had a higher chance to produce both clause-internal and clause-external codeswitches. Thus, as predicted, speakers who produced more cognates tended to codeswitch more than speakers who produced fewer cognates, in line with our proposal that both the production of cognates and of codeswitches is more common for speakers in a more strongly bilingual language mode (Grosjean, 1998; Soares & Grosjean, 1984). The strong correlation between the proportions of cognates throughout the conversation for conversational partners further shows that conversational partners are aligned in this respect.

The third hypothesis, that a larger number of cognates within a clause would increase the likelihood of the clause being externally codeswitched, was also confirmed. The Number of Cognates affected clause-external codeswitches, with a larger number of cognates in the clause being associated with a higher proportion of clause-external codeswitches by the same speaker. (For clause-INTERNAL codeswitching, a larger number of cognates within a clause was NOT predicted to be related to an increased likelihood of codeswitching, because a larger number of cognates implies a relatively smaller number of non-cognates within the clause, such that there is less opportunity for clause-internal codeswitching. Indeed, the Number of Cognates in fact even decreased the likelihood of clause-internal codeswitching; see Appendix.) The confirmation of the third hypothesis is in line with the common view that lexical activation is incremental in nature (e.g., Levelt et al., 1999; Pitt & Samuel, 2006).

The fourth hypothesis was that codeswitching would be facilitated for some time AFTER the production of a cognate, such that the production of a cognate in one clause would facilitate

**Table 5.** Model predicting the production of clause-external codeswitches in the next clause (forward method), with the variable Speaker Change.

Predictor	Clause-external codeswitches (forward)		
	$\beta$	st.err.	z value
Intercept	-4.79	.15	-31.02*
Presence of Cognates	.24	.11	2.21*
Speaker Change	.42 (s)	.19	2.20*
Proportion of Cognates per Speaker	35.66	4.31	8.28*
Presence of Cognates * Speaker Change	-1.01	.22	-4.44*
Presence of Cognates * Proportion of Cognates per Speaker	-3.53	3.74	-.94
Speaker Change * Proportion of Cognates per Speaker	12.13	5.67	2.14*
Presence of Cognates * Speaker Change * Proportion of Cognates per Speaker	18.79	4.69	4.00*

codeswitching not only in the same clause, but also in the next clause from the same speaker. Confirming the hypothesis, clauses that contained cognates were more often followed by external codeswitches IN THE NEXT CLAUSE than clauses that did not contain any cognates. This shows that the effect of cognates extended beyond the clause that they were part of. This finding is in line with the common view that activation in the linguistic (and non-linguistic) system, including that of a language network, is retained for some time, and decays over time only gradually (e.g., Foygel & Dell, 2000; Green & Wei, 2014; Paradis, 1998, 2004).

The fifth hypothesis was that cognates produced by one interlocutor would not facilitate codeswitching by the other interlocutor to the same extent as self-produced cognates did. To this end, it was assessed whether there was an effect of cognates produced by one speaker on the clause-external codeswitches produced by the other speaker in the next clause. The results showed that the Presence of Cognates in clauses produced by one speaker did not predict the likelihood of clause-external codeswitches in the following clause by the other speaker. Comparing cases with and without speaker change, a significant interaction between Presence of Cognates and Speaker Change confirmed the differential effect of cognates on codeswitching when the cognates were self-produced versus when they were produced by the conversational partner. The results thus confirm and extend those from Broersma et al. (2009), who also found no evidence that cognates from one speaker facilitated codeswitching by the other speaker. Syntactic priming studies have shown that the perception of sentences affects consecutive production (both within and across languages, and in codeswitching, e.g., Fricke & Kootstra, 2016; Hartsuiker & Bernolet, 2017; Loebell & Bock, 2003; Pickering & Ferreira, 2008). Studies that directly compared self-priming to inter-speaker priming have shown that such priming tends to be stronger when both utterances are produced by a single speaker than when they are produced by two different speakers (Fricke & Kootstra, 2016; Gries, 2005). The present findings provide further evidence that self-priming is stronger than between-speaker priming – the latter of which here in fact being non-existent.

#### 4.2. Cognitive mechanisms underlying triggered codeswitching

This study has found corroborating evidence that the production of cognates is related to the occurrence of codeswitching. It has

been proposed that this is the result of a shift in the activation levels of the speaker's two languages (Broersma & De Bot, 2006). The lexical activation and selection of a cognate is proposed to cause a particularly strong activation of the cognate's lemmas as well as word form representations, not only in the intended language but also in the non-selected language. This activation of the translation equivalent in the non-selected language is proposed to be stronger for cognate than for non-cognate target words<sup>6</sup>. Several mechanisms might contribute to this, all as a result of the cognates' overlap in word form and meaning. First, as lexical representations from both languages are believed to be activated when bilinguals speak (e.g., Abutalebi & Green, 2007; Branzi et al., 2014; Costa & Caramazza, 1999; Costa & Santesteban, 2004, 2006; De Bot, 1992; Finkbeiner et al., 2006; Green, 1998; Green & Wei, 2014; Kroll et al., 2008; Kroll et al., 2006), producing a cognate (like any other word) involves activating the cognate's lemmas in both languages. The cognate's form overlap might then enhance the activation of the two word form representations because, as both lemmas send activation to the corresponding word form, the overlapping parts of the word forms might receive activation from both lemmas. Second, it has been proposed that feedback loops from the word forms to the lemmas further increase the activation of the two lemmas (Bernolet et al., 2012; Declerck & Philipp, 2015), as the cognate's lemmas receive activation from two rather than one word form representations, the activation of which was already enhanced. Third, as the conceptual representations of cognate pairs might be particularly closely connected (De Groot & Nas, 1991; Van Hell & De Groot, 1998; Van Hell & Dijkstra, 2002), the activation of a cognate's lemma in one language might spread to the other lemma via the concept level (Broersma & De Bot, 2006). Thus, the selection of a cognate in one language would enhance the activation of the cognate's lemma and form representation in the other language particularly strongly. As languages are commonly assumed to function as subsystems in a shared system (Green & Wei, 2014; Paradis, 1987, 2004), the selection of a cognate could thus boost the activation of the non-selected language as a whole, which has been proposed to increase the likelihood of switching to that language after the production of a cognate (Broersma & De Bot, 2006).

<sup>6</sup>'False friends', i.e., words with similar forms but different meanings in the two languages, could help test this proposal. That was not attempted here, as the corpus does not contain the information required for such a test.

The present study, as well as previous studies on triggered codeswitching (Broersma, 2009; Broersma & De Bot, 2006; Broersma et al., 2009; Clyne, 1967, 1972, 1977, 1980, 2003), has provided evidence that there is a relation between the production of cognates and the occurrence of codeswitching. The results however cannot unambiguously uncover the direction or causality of the relation. It is possible for example that, contrary to what we have proposed, codeswitching in fact enhances the production of cognates. This seems a less likely interpretation, however, as word choice is first and foremost bound by the message a speaker wants to convey and, for most concepts, speakers do not have a choice between a cognate and a non-cognate alternative. Whereas there is certainly some room to choose cognates over non-cognates, this alone seems too limited to explain the reported patterns of co-occurrence.

It is also possible that a shared underlying source contributes to the production of both cognates and codeswitches. In line with this, we have proposed that a more strongly bilingual language mode would stimulate the production of cognates as well as codeswitches. The results confirm that speakers who produced more cognates throughout the conversation (i.e., with a higher cognate density) also produced more codeswitches throughout. This positive global relation thus conforms to the notion that a more strongly bilingual language mode (Grosjean, 1998; Soares & Grosjean, 1984) contributes to the production not only of codeswitches, but also, as we have proposed, of cognates. Further, we found that speaker dyads produced highly similar proportions of cognates within a conversation, suggesting that conversational partners have aligned language modes. An interesting perspective on this comes from Dynamic Systems Theory (Bak, 1996), proposing that linguistic systems are attracted to a critical state, where small events can lead to big and unpredictable changes (De Bot et al., 2009; De Bot et al., 2007). In bilingual settings like the ones studied here, speakers might codeswitch and use the (limited) room they have in choosing cognates over non-cognates to attain such a critical state. Both cognates and codeswitches might thus be tools for the achievement of ‘self-organized criticality’.

Whereas language mode and self-organized criticality might thus explain the positive global relation between cognate density and codeswitching, it cannot explain the local relation between specific cognates and codeswitches in the same or in the next clause. We therefore believe that the most convincing interpretation of the reported pattern of co-occurrence of specific cognates and codeswitches is the account described above, in which the lexical selection of cognates enhances the activation of the non-selected language, thereby facilitating a switch to that language. We thus argue that the relation is causal, with cognates facilitating codeswitches. The two accounts are not mutually exclusive and can each explain different aspects of triggered codeswitching.

The local relation between cognates and codeswitches in the same or the next clause – that is, triggered codeswitching proper – can be further understood in terms of Green and Wei’s control process model of codeswitching (2014). It proposes that insertional and alternational codeswitches as found in the Siarad corpus (with the large majority of codeswitches consisting of English insertions into clauses where Welsh is the base language) are produced in a coupled control mode where control of language choice passes from one language task schema to the other. In addition to codeswitches that are planned at a higher level, this control mode also allows for codeswitches that result from a change

in language activation because of, for example, the selection of a cognate (Green & Wei, 2014).

### 4.3. Conclusions

This study has provided further evidence that the production of cognates can facilitate codeswitching. It has further specified and tested the proposed psycholinguistic account for triggered codeswitching, which entails that the lexical selection of a cognate can lead to a shift in the activation of two language subsets, enhancing the activation of the least active language, resulting in an increased likelihood of codeswitching (as first proposed by Broersma and de Bot, 2006). This account was connected with current insights in lexical processing from which five hypotheses were derived, and tested against a large-scale corpus of bilingual speech.

Assessing the regularities of triggered codeswitching in the corpus, it was found that: 1) there were more clause-internal and clause-external codeswitches in clauses containing cognates than in clauses without cognates; 2) speakers who produced more cognates throughout the conversation codeswitched more than speakers who produced fewer cognates, suggesting a global effect of the language mode they were in (Grosjean, 1998; Soares & Grosjean, 1984); 3) a larger number of cognates in a clause increased the likelihood of clause-external codeswitching, in line with the common idea that activation is incremental (e.g., Levelt et al., 1999; Pitt & Samuel, 2006); 4) codeswitching was still facilitated for some time after the production of a cognate, in line with the notion that activation in the linguistic system decays gradually (e.g., Foygel & Dell, 2000; Green & Wei, 2014; Paradis, 1998, 2004); and 5) hearing rather than producing a cognate had no facilitatory effect on codeswitching, reminiscent of findings of syntactic priming being stronger within than across speakers (Fricke & Kootstra, 2016; Gries, 2005).

The confirmation of the five hypotheses corroborates the validity of the proposed cognitive account of triggered codeswitching, and further clarifies the relation between the lexical activation of cognates and the realization of codeswitches, in accord with current insights in lexical processing. Finally, this study complements previous psycholinguistic work on language switching, which has predominantly entailed single-word experimental tasks, by investigating the processes of language choice within the context of conversational dynamics.

**Acknowledgements.** This research was supported by a Small Research Grant from the British Academy awarded to the first and second authors. Writing was supported by a Vidi grant from the Netherlands Organisation for Scientific Research (NWO), awarded to the first author. We gratefully acknowledge the support of the Max Planck Institute for Psycholinguistics and the Bangor Bilingualism Centre. We also want to express our gratitude to our reviewers, whose insightful comments and creative suggestions have greatly contributed to the improvement of this paper; we have enjoyed the exchange!

### References

- Abutalebi J and Green D (2007) Bilingual language production: The neurocognition of language representation and control. *Journal of Neurolinguistics* 20, 242–275.
- Altmann EM and Gray WD (2002) Forgetting to remember: The functional relationship of decay and interference. *Psychological Science* 13, 27–33.
- Appel R and Muysken P (1987) *Language Contact and Bilingualism*. London: Edward Arnold.

- Auer P (1984) *Bilingual Conversation*. Amsterdam: John Benjamins.
- Auer P (ed) (1998) *Code-Switching in Conversation: Language, Interaction and Identity*. London: Routledge.
- Bak P (1996) *How Nature Works: The Science of Self-Organised Criticality*. New York, NY: Copernicus.
- Barr DJ, Levy R, Scheepers C and Tily HJ (2013) Random effects structure for confirmatory hypothesis testing: Keep it maximal. *Journal of Memory and Language* **68**, 255–278.
- Bernolet S, Hartsuiker RJ and Pickering MJ (2012) Effects of phonological feedback on the selection of syntax: Evidence from between-language syntactic priming. *Bilingualism: Language and Cognition* **15**, 503–516.
- Blom J and Gumperz JJ (1972) Social meaning in linguistic structures: Code-switching in Norway. In Gumperz JJ and Hymes D (eds), *Directions in Sociolinguistics: The Ethnography of Communication*. New York: Holt, Rinehart and Winston, pp. 407–434.
- Branzi FM, Martin CD, Abutalebi J and Costa A (2014) The after-effects of bilingual language production. *Neuropsychologia* **52**, 102–116.
- Broersma M (2009) Triggered codeswitching between cognate languages. *Bilingualism: Language and Cognition* **12**, 447–462.
- Broersma M (2011) Triggered code-switching: Evidence from picture naming experiments. In Schmid MS and Lowie W (eds), *Modeling Bilingualism From Structure to Chaos: In Honor of Kees de Bot*. Amsterdam: John Benjamins, pp. 37–57.
- Broersma M, Carter D and Acheson DJ (2016) Cognate costs in bilingual speech production: Evidence from language switching. *Frontiers in Psychology* **7**:1461, 1–16. doi: 10.3389/fpsyg.2016.01461
- Broersma M and De Bot K (2006) Triggered codeswitching: A corpus-based evaluation of the original triggering hypothesis and a new alternative. *Bilingualism: Language and Cognition* **9**, 1–13.
- Broersma M, Isurin L, Bultena S and De Bot K (2009) Triggered code switching: Evidence from Dutch-English and Russian-English bilinguals. In Isurin L, Winford D and De Bot K (eds), *Multidisciplinary approaches to code switching*. Amsterdam: John Benjamins, pp. 103–128.
- Bultena S, Dijkstra T and Van Hell J (2015) Language switch costs in sentence comprehension depend on language dominance: Evidence from self-paced reading. *Bilingualism: Language and Cognition* **18**, 453–469. doi: 10.1017/S1366728914000145
- Carter D, Broersma M and Donnelly K (2016) Applying computing innovations to bilingual corpus analysis. In De la Fuente AA, Valenzuela E and Sanz CM (Eds), *Language Acquisition Beyond Parameters: Studies in Honour of Juana M. Licerias*. Amsterdam: John Benjamins, pp. 281–301.
- Carter D, Broersma M, Donnelly K and Konopka A (2017) Presenting the Bangor Autoglosser and the Bangor Automated Clause-Splitter. *Digital Scholarship in the Humanities*, fqw065 1–8. doi: 10.1093/llc/fqw065.
- Carter D, Deuchar M, Davies P and Parafita Couto M (2011) A systematic comparison of factors affecting the choice of matrix language in three bilingual communities. *Journal of Language Contact* **4**, 153–183.
- Christoffels IK, De Groot AMB and Kroll JF (2006) Memory and language skills in simultaneous interpreters: The role of expertise and language proficiency. *Journal of Memory and Language* **54**, 324–345.
- Christoffels IK, Firk C and Schiller NO (2007) Bilingual language control: An event-related brain potential study. *Brain Research* **1147**, 192–208.
- Clyne M (1967) *Transference and Triggering: Observations on the Language Assimilation of Postwar German-Speaking Migrants in Australia*. The Hague: Martinus Nijhoff.
- Clyne M (1972) *Perspectives on Language Contact: Based on a Study of German in Australia*. Melbourne: Hawthorn.
- Clyne M (1977) Nieuw-Hollands or Double Dutch. *Dutch Studies* **3**, 1–20.
- Clyne M (1980) Triggering and language processing. *Canadian Journal of Psychology* **34**, 400–406.
- Clyne M (2003) *Dynamics of Language Contact: English and Immigrant Languages*. Cambridge: CUP.
- Costa A and Caramazza A (1999) Is lexical selection in bilingual speech production language-specific? Further evidence from Spanish-English and English-Spanish bilinguals. *Bilingualism: Language and Cognition* **2**, 231–244.
- Costa A, Caramazza A and Sebastián-Gallés N (2000) The cognate facilitation effect: Implications for models of lexical access. *Journal of Experimental Psychology: Learning, Memory, and Cognition* **26**, 1283–1296.
- Costa A and Santesteban M (2004) Lexical access in bilingual speech production: Evidence from language switching in highly proficient bilinguals and L2 learners. *Journal of Memory and Language* **50**, 491–511.
- Costa A and Santesteban M (2006) The control of speech production by bilingual speakers: Introductory remarks. *Bilingualism: Language and Cognition* **9**, 115–117.
- Cutler A (2012) *Native Listening: Language Experience and the Recognition of Spoken Words*. Cambridge, MA: MIT.
- Davies PGC (2010) *Identifying Word-Order Convergence in the Speech of Welsh-English Bilinguals*. Doctoral dissertation, Bangor University, Wales, UK.
- De Bot K (1992) A bilingual production model: Levelt's 'Speaking' model adapted. *Applied Linguistics* **13**, 1–24.
- De Bot K, Broersma M and Isurin L (2009) Sources of triggering in code switching. In Isurin L, Winford D and De Bot K (eds), *Multidisciplinary approaches to code switching*. Amsterdam: John Benjamins, pp. 85–102.
- De Bot K, Lowie W and Verspoor M (2007) A dynamic systems theory approach to second language acquisition. *Bilingualism: Language and Cognition* **10**, 7–21.
- De Groot AMB and Nas GLJ (1991) Lexical representation of cognates and noncognates in compound bilinguals. *Journal of Memory and Language* **30**, 90.
- Declerck M and Philipp AM (2015) The unusual suspect: Influence of phonological overlap on language control. *Bilingualism: Language and Cognition* **18**, 726–736.
- Deuchar M, Davies P, Herring J, Parafita Couto MC and Carter D (2014) Bilingual language use. In Thomas E and Mennen I (eds), *Advances in the Study of Bilingualism*. Bristol: Multilingual Matters, pp. 93–110.
- Deuchar M, Donnelly K and Piercy C (2016) 'Mae pobl monolingual yn minority': Factors favouring the production of code-switching by Welsh-English bilingual speakers. In Durham M and Morris J (eds), *Sociolinguistics in Wales*. London: Palgrave Macmillan.
- Di Sciullo A, Muysken P and Singh R (1986) Government and code-mixing. *Journal of Linguistics* **22**, 1–24.
- Dijkstra T, Grainger J and Van Heuven WJB (1999) Recognition of cognates and interlingual homophones: The neglected role of phonology. *Journal of Memory and Language* **41**, 496–518.
- Donnelly K and Deuchar M (2011) *The Bangor Autoglosser: A Multilingual Tagger for Conversational Text*. Paper presented at the Internet Technologies and Applications 11, Wrexham, UK.
- ESRC\_Centre\_for\_Research\_on\_Bilingualism. (n.d.) <http://bangortalk.org.uk>.
- Filippi R, Karaminis T and Thomas MSC (2014) Language switching in bilingual production: Empirical data and computational modelling. *Bilingualism: Language and Cognition* **17**, 294–315.
- Finkbeiner M, Gollan TH and Caramazza A (2006) Lexical access in bilingual speakers: What's the (hard) problem? *Bilingualism: Language and Cognition* **9**, 153–166.
- Fishman JA (1967) Bilingualism with and without diglossia; Diglossia with and without bilingualism. *Journal of Social Issues* **23**, 29–38. doi: 10.1111/j.1540-4560.1967.tb00573.x
- Foygel D and Dell GS (2000) Models of impaired lexical access in speech production. *Journal of Memory and Language* **43**, 182–216.
- Fricke M and Kootstra GJ (2016) Primed codeswitching in spontaneous bilingual dialogue. *Journal of Memory and Language* **91**, 181–201. doi: <http://doi.org/10.1016/j.jml.2016.04.003>
- Gardner-Chloros P (2009) *Code-switching*. Cambridge: CUP.
- Gollan TH and Acenas LAR (2004) What is a TOT? Cognate and translation effects on tip-of-the-tongue states in Spanish-English and Tagalog-English bilinguals. *Journal of Experimental Psychology: Learning, Memory, and Cognition* **30**, 246–269.
- Gollan TH, Forster KI and Frost R (1997) Translation priming with different scripts: Masked priming with cognates and noncognates in Hebrew-English bilinguals. *Journal of Experimental Psychology: Learning, Memory, and Cognition* **23**, 1122–1139.
- Green DW (1986) Control, activation, and resource: A framework and a model for the control of speech in bilinguals. *Brain and Language* **27**, 210–223.
- Green DW (1998) Mental control of the bilingual lexico-semantic system. *Bilingualism: Language and Cognition* **1**, 67–81.

- Green DW and Wei L** (2014) A control process model of code-switching. *Language, Cognition and Neuroscience* **29**, 499–511. doi: 10.1080/23273798.2014.882515
- Gries ST** (2005) Syntactic priming: A corpus-based approach. *Journal of Psycholinguistic Research* **34**, 365–399. doi: 10.1007/s10936-005-6139-3
- Grosjean F** (1998) Studying bilinguals: Methodological and conceptual issues. *Bilingualism: Language and Cognition* **1**, 131–149.
- Halmari H** (1997) *Government and Codeswitching: Explaining American Finnish*. Amsterdam: John Benjamins.
- Hartsuiker RJ and Bernolet S** (2017) The development of shared syntax in second language learning. *Bilingualism: Language and Cognition* **20**, 219–234.
- Hartsuiker RJ, Pickering MJ and Veltkamp E** (2004) Is syntax separate or shared between languages? *Psychological Science* **15**, 409–414.
- Hernandez AE** (2009) Language switching in the brain: What's next? *Brain and Language* **109**, 133–140.
- Hoshino N and Kroll JF** (2008) Cognate effects in picture naming: Does cross-language activation survive a change of script? *Cognition* **106**, 501–511.
- Ivanova I and Costa A** (2008) Does bilingualism hamper lexical access in speech production? *Acta Psychologica* **127**, 277–288.
- Jackson GM, Swainson R, Cunningham R and Jackson SR** (2001) ERP correlates of executive control during repeated language switching. *Bilingualism: Language and Cognition* **4**, 169–178.
- Jaeger TF** (2008) Categorical data analysis: Away from ANOVAs (transformation or not) and towards logit mixed models. *Journal of Memory and Language* **59**, 434–446
- Kleinman D and Gollan TH** (2016) Speaking two languages for the price of one: Bypassing language control mechanisms via accessibility-driven switches. *Psychological Science* **27**, 700–714.
- Konopka AE and Meyer AS** (2014) Priming sentence planning. *Cognitive Psychology* **73**, 1–40. doi: <https://doi.org/10.1016/j.cogpsych.2014.04.001>
- Kootstra GJ and Doedens WJ** (2016) How multiple sources of experience influence bilingual syntactic choice: Immediate and cumulative cross-language effects of structural priming, verb bias, and language dominance. *Bilingualism: Language and Cognition* **19**, 710–732. doi: <http://dx.doi.org/10.1017/S1366728916000420>
- Kootstra GJ, Van Hell JG and Dijkstra T** (2009) Two speakers, one dialogue: An interactive alignment perspective on code-switching in bilingual speakers. In Isurin L, Winford D and De Bot K (eds), *Multidisciplinary approaches to code switching*. Amsterdam: John Benjamins, pp. 129–159.
- Kootstra GJ, Van Hell JG and Dijkstra T** (2010) Syntactic alignment and shared word order in code-switched sentence production: Evidence from bilingual monologue and dialogue. *Journal of Memory and Language* **63**, 210–231.
- Kootstra GJ, Van Hell JG and Dijkstra T** (2012) Priming of code-switches in sentences: The role of lexical repetition, cognates, and language proficiency. *Bilingualism: Language and Cognition* **15**, 797–819.
- Kroll JF, Bobb SC, Misra M and Guo T** (2008) Language selection in bilingual speech: Evidence for inhibitory processes. *Acta Psychologica* **128**, 416–430.
- Kroll JF, Bobb SC and Wodniecka Z** (2006) Language selectivity is the exception, not the rule: Arguments against a fixed locus of language selection in bilingual speech. *Bilingualism: Language and Cognition* **9**, 119–135.
- Kroll JF and Stewart E** (1994) Category interference in translation and picture naming: Evidence for asymmetric connections between bilingual memory representations. *Journal of Memory and Language* **33**, 149–174.
- Lehtinen MKT** (1966) *An Analysis of a Finnish-English Bilingual Corpus*. Doctoral dissertation. Bloomington, IN: Indiana University.
- Lemhöfer K and Dijkstra T** (2004) Recognizing cognates and interlingual homographs: Effects of code similarity in language-specific and generalized lexical decision. *Memory & Cognition* **32**, 533–550.
- Leopold WF** (1939–1949). *Speech Development of a Bilingual Child: A Linguist's Record (Vol 1-4)*. Evanston, IL: Northwestern University.
- Levelt WJM** (1989) *Speaking: From intention to articulation*. Cambridge: MIT.
- Levelt WJM, Roelofs A and Meyer AS** (1999) A theory of lexical access in speech production. *Behavioral and Brain Science* **22**, 1–75.
- Li C and Gollan TH** (2018) Cognates interfere with language selection but enhance monitoring in connected speech. *Memory & Cognition* **46**, 923–939.
- Liberman AM, Cooper FS, Shankweiler DP and Studdert-Kennedy M** (1967) Perception of the speech code. *Psychological Review* **74**, 431–461.
- Loebell H and Bock K** (2003) Structural priming across languages. *Linguistics* **41**, 791–824.
- Luckmann T** (1983) Comment [on L.B. Breitborde]. *International Journal of the Sociology of Language* **39**, 97–101.
- MacWhinney B** (2000) *The CHILDES Project: Tools for Analyzing Talk* (3rd ed.). Mahway, NJ: Lawrence Erlbaum.
- Meuter RFI and Allport A** (1999) Bilingual language switching in naming: Asymmetrical costs of language selection. *Journal of Memory and Language* **40**, 25–40.
- Muysken P** (2000) *Bilingual Speech: A Typology of Code-Mixing*. Cambridge: CUP.
- Myers-Scotton C** (1993a) Common and uncommon ground: Social and structural factors in codeswitching. *Language in Society* **22**, 475–503.
- Myers-Scotton C** (1993b) *Social Motivations for Codeswitching: Evidence from Africa*. Oxford: Oxford University Press.
- Myers-Scotton C** (1997) *Duelling languages: Grammatical structure in codeswitching*. Oxford: Oxford University Press.
- Myers-Scotton C and Jake JL** (2000) Four types of morpheme: Evidence from aphasia, code switching, and second-language acquisition. *Linguistics* **38**, 1053–1100.
- Paradis M** (1987) *The Assessment of Bilingual Aphasia*. Hillsdale, NJ: Lawrence Erlbaum.
- Paradis M** (1998) Aphasia in bilinguals: How atypical is it? In Coppens P, Lebrun Y and Basso A (eds), *Aphasia in Atypical Populations*. Mahwah, NJ: Lawrence Erlbaum, pp. 35–65.
- Paradis M** (2004) *A Neurolinguistic Theory of Bilingualism*. Amsterdam: John Benjamins.
- Pickering MJ and Ferreira VS** (2008) Structural priming: A critical review. *Psychological Bulletin* **134**, 427–459.
- Pitt M and Samuel AG** (2006) Word length and lexical activation: Longer is better. *Journal of Experimental Psychology: Human Perception and Performance* **32**, 1120–1135.
- Poplack S** (1980) Sometimes I'll start a sentence in Spanish Y TERMINO EN ESPAÑOL: Toward a typology of code-switching. *Linguistics* **18** (581–618).
- R Development Core Team**. (2009) R: A language and environment for statistical computing. Vienna, Austria: R Foundation for Statistical Computing. ISBN 3-900051-07-0, URL <http://www.R-project.org>.
- Ronjat J** (1913) *Le Développement du Langage Observé chez un Enfant Bilingue*. Paris: Librairie Ancienne H. Champion.
- Sankoff D and Poplack S** (1981) A formal grammar for code-switching. *Papers in Linguistics: International Journal of Human Communication* **14**, 3–45.
- Soares C and Grosjean F** (1984) Bilinguals in a monolingual and a bilingual speech mode: The effect on lexical access. *Memory & Cognition* **12**, 380–386.
- Stammers JR and Deuchar M** (2012) Testing the nonce borrowing hypothesis: Counter-evidence from English-origin verbs in Welsh. *Bilingualism: Language and Cognition* **15**, 630–643.
- Strijkers K, Costa A and Thierry G** (2010) Tracking lexical access in speech production: Electrophysiological correlates of word frequency and cognate effects. *Cerebral Cortex* **20**, 912–928.
- Van Hell J and De Groot AMB** (1998) Conceptual representation in bilingual memory: Effects of concreteness and cognate status in word association. *Bilingualism: Language and Cognition* **1**, 193–211.
- Van Hell J and Dijkstra T** (2002) Foreign language knowledge can influence native language performance in exclusively native contexts. *Psychonomic Bulletin & Review* **9**, 780–789.
- Verhoef K, Roelofs A and Chwilla DJ** (2009) Role of inhibition in language switching: Evidence from event-related brain potentials in overt picture naming. *Cognition* **110**, 84–99.
- Verhoef K, Roelofs A and Chwilla DJ** (2010) Electrophysiological evidence for endogenous control in switching between languages in overt picture naming. *Journal of Cognitive Neuroscience* **22**, 1832–1843.
- Weinreich U** (1953) *Languages in Contact: Findings and Problems*. The Hague: Mouton.

## Appendix

Model predicting the production of clause-internal codeswitches, including only clauses where the Number of Cognates is larger than 0. (s) refers to the inclusion of random slopes. Coefficients are given in *log odds*, but are reported in the text as *odds ratios* (for main effects). \* =  $p < .05$  (including smaller  $p$  values); † =  $p < .10$ .

Predictor	Clause-internal codeswitches		
	$\beta$	st.err.	z value
Intercept	-2.09	.12	-17.02*
Number of Cognates	-.16 (s)	.06	-2.69*
Clause Length	.14 (s)	.01	14.47*
Number of Cognates * Clause Length	-.01 (s)	.01	-1.06*